



English Language Courses for Adults

   **UK & North American Schools**

2017/2018

oxfordinternationalenglish.com

Hello

Mastering English has many benefits and uses – whether for everyday life, travel, work, leisure, or preparing for future academic study.

Welcome To Our Global Community

Oxford International has been helping students achieve their English language learning goals for over 25 years. Today, we have grown to provide English language courses for students aged 16+ throughout six schools, based in some of the most stimulating cities in the UK, US and Canada. Our mission is to create life-enhancing study experiences that help students reach their potential. Whatever your reason for learning English, we will provide you with expert tuition and a study plan that meets your needs.



In This Brochure

Choosing Your Course	04
Supporting You	06
UK Courses	08
North American Courses	10
Welfare	14
Social Activities	16
Our Centres	18

Locations

UK	
London Greenwich	20
Oxford	24
Brighton	28

Canada	
Toronto	32
Vancouver	36

USA	
San Diego	40

Oxford International Programmes	44
--	----

Contact Us	Back Cover
-------------------	------------

Choosing the right course for you in **4** simple steps:



1. Know Your Level



2. Understand Your Targets



3. Choose The Appropriate Course



4. Pick A Location

Which Course To Choose?

We teach up to 7 different levels in our UK schools (or 10 in our North American schools), based on the Common European Framework of Reference for languages (CEFR),* and we regularly teach levels A1 to C1. In order to learn effectively, it is important that you study at the correct level with students of similar ability.

We expect most students to progress to the next level after 12 weeks, if they are studying for 15 hours per week. If you study for more hours per week, progress will be faster. You should choose your course according to how fast and how far you wish to progress in the time you have to study. But remember: the amount you progress depends on many factors and not just time in the classroom. It also depends on how hard you work and practise English outside the classroom with other students on the social programme, with people you meet, with your host family, or through doing homework.

Progress will also depend on your level of English when you arrive. Some students may only need a short time in a level before they are ready to move to the next and some students who are at the very beginning of a level may need longer. Every student is an individual with different abilities and needs – which we take into account when, in consultation with the student, we devise a study plan for them.

When you arrive at the school you will be given a placement test and we will discuss your individual priorities, strengths and weaknesses in order to find the best class and learning plan for you. Once you start learning, we will have regular tutorials and tests to ensure you are making good progress and are on course to achieve your learning goals.

**Levels A0 and C2 are subject to demand.*



“The study schedule is very good, and the teachers are very experienced and patient.”

Fernanda, 18 years old - Mexico

Levels And Progress Table

The table below indicates the communication skills you will have when you complete each level*.

Level	AO (Beginner)	A1 (Elementary)	A2 (Pre-intermediate)	B1 (Intermediate)	B2 (Upper intermediate)	C1 (Advanced)	C2 (Proficient)
Description of expected abilities at the end of the course	Able to use simple expressions and phrases to communicate basic information in simple social interactions.	Can exchange information relating to basic tasks in familiar and routine situations.	Able to understand and communicate purposefully to meet the requirements of relevant social contexts.	Able to understand clear speech and talk about a range of familiar topics, expressing opinions, plans, explanations and reasons.	Able to understand more complex extended texts and produce coherent discourses using an appropriate range of vocabulary and grammatical constructions.	Able to discuss a wide variety of topics fluently and accurately, recognising differences in register and emphasis, and demonstrating an extended range of organisational and structural devices and vocabulary.	Able to follow very complex written and spoken texts fully, with an appreciation of style and nuances of meaning. Able to express ideas spontaneously and fluently, using linguistic and paralinguistic devices to convey meaning clearly and accurately.
15 hrs p/w	10-12 Weeks	10-12 Weeks	10-12 Weeks	10-12 Weeks	10-12 Weeks	12-14 Weeks	12-14 Weeks

*Our North American courses range from Level 1 to Level 10 and aligned with the CEFR from A1 to C2 as per the table above.

We have learning strategies in place that will help you make excellent progress and reach your full potential in using and understanding English.



Your Needs

Before you enrol, we can discuss your needs with you and any additional support you require. Once you arrive at the school, you will have an initial test along with a consultation on your level of English and the particular language programme that suits you. Progress is then measured fortnightly with assessments, and also monitored through the student tutorial system.



Extra Language Practice

- Gain practical information and feedback.
- Explore language-related issues.
- Obtain extra study materials.
- Review exams.

Student Support offers extra language practice and input if you would like more help in a certain area. Student Support is a **15-minute, one-to-one session** – or sometimes a drop-in session – overseen by our most experienced teachers.



Self-study

All students have access to the school's online learning platform. You can choose from a number of self-study exercises:

Entry test feedback: Initially, you will complete an entry test. You can see the results immediately, and you will be directed to different exercises which focus on any mistakes you may have made in the test.

Genuine reading texts: These are authentic reading texts from recognised news websites (e.g. BBC). The texts all have vocabulary lists and vocabulary tests.

Study plan lessons: These have materials relating to a wide variety of topics. You can practise reading, listening and writing skills as well as vocabulary in relevant contexts.

Examination practice: You can practise exam questions for IELTS or other English exams.

External links: These link to a variety of different study support pages (e.g. British Council), and additional exam practice papers.



Online Platform

Our online platform gives you a wealth of material with which to improve your English in your study time and at home. The site contains our placement test, which gives instant feedback on areas you need to work on to improve. Student Tutorials are also kept on the site, which you can access at all times, reviewing your goals and progress through your classes. It is a powerful tool that aids learning and monitors progress, featuring:

- Benchmarked, self-contained lessons from basic to advanced, using a variety of printed, interactive and listening exercises.
- Grammar and vocabulary quizzes.
- A verb tense section, looking at basic to advanced-level use.
- Video news lessons with accompanying exercises.
- A dedicated IELTS exam section, looking at all aspects of the test.
- A dedicated Business English section, with communicative exercises.



‘This is a unique and unforgettable experience!’

Maya, 22 years old - Peru



UK Courses

Once your English programme begins, you will be immersed in a variety of focused courses, each targeted towards specific areas of English language learning and assessment for either your UK or North American school.

A photograph of a classroom window with white horizontal blinds. Large, bright blue letters spelling out the word 'CLASS' are attached to the window. The blinds are partially open, and the background shows a blurred view of a building.

‘I like the small classes, great teachers and interesting programmes.’

Elena, 24 years old - Italy

UK Schools Courses

General English Classes

These classes work on the four skills (reading, speaking, listening and writing) and have a strong grammar and vocabulary input appropriate to the level of the class. The focus is on the presentation of new language, and using the communicative teaching approach to enable you to practise in real-world situations. The course books that are used are mapped to the CEFR framework Can-Do statements.

These classes also have bi-weekly progress tests, which review learning from the previous two weeks, as well as individual tutorials in which you and your teacher discuss your individual learning needs.

Skills Classes

These classes promote competency in the four skills (reading, speaking, listening and writing) as well as focusing on pronunciation. Each week features a dedicated topic which is examined in detail. The content is also drawn from student requests and needs identified by the teacher. These classes are designed to enable you to use what you have learnt in class and in your daily life.

Exam Classes

These classes focus on the language skills required for each specific exam, as laid out by the accrediting bodies and course books written for the exam in question. There is also a focus on exam task awareness and the development of strategies to cope with the exam, plus timed practice under exam conditions. Class content is focused on the requirements of the exam being taken.

One-to-One Lessons

These focus on your specific requirements. For example, if you plan to go to university, the One-to-One classes could focus on academic English skills and development of strategies for writing and reading. If you need English for your job, we can help identify specific language requirements, and devise a programme to focus on meeting those particular language needs.

UK Schools Course Schedule

Course Title	Daily Times	Hours Per Week	Centres
General English (for levels A1-C1)			
Morning 20	9.00 – 12.15	20 x 45min lessons, 15hrs	All
Morning 30	9.00 – 14.30	30 x 45min lessons, 22.5hrs	All
Full day: intensive	9.00 – 16.30	40 x 45min lessons, 30hrs	All
Afternoon 20	13.00 – 16.30	20 x 45min lessons, 15hrs	All
Examination courses (for level B2+)			
Cambridge Exam 20	9.00 – 12.15	20 x 45min lessons, 15hrs	12-14 weeks
Cambridge Exam 30	9.00 – 14.30	30 x 45min lessons, 22.5hrs	12-14 weeks
IELTS 20	9.00 – 12.15	20 x 45min lessons, 15hrs	12-14 weeks
IELTS 30	9.00 – 14.30	30 x 45min lessons, 22.5hrs	12-14 weeks
Specialist courses (for levels B1/B2+)			
Business 20	9.00 – 12.15	20 x 45min lessons, 15hrs	London Greenwich
English with Specialism	13.00 – 14.30	20 x 45min lessons (15hrs) plus one-to-one lessons	General English at Oxford + Specialist subject at Oxford Tutorial College
Total Immersion	15 hours of one-to-one tuition, and 15 hours' teacher accompaniment on cultural activities, including 2 paid lunches in a local restaurant		All
One-to-one	Please see tariff		



North American Schools Courses

North American Schools Class Schedule - General English

	Monday	Tuesday	Wednesday	Thursday	Friday		
08:50 – 9:40	Self-Study	Language Development, Grammar, Vocabulary/Idioms, Pronunciation, Social Functions, Review/Discussion					
09:40 – 10:30	Language Development						
10:30 – 10:50	Break						
10:50 – 11:40	English Skills, Listening, Speaking, Writing, Reading						
11:40-11:50	Break						
11:50-12:40	English Skills						
12:40-13:40	Lunch						
13:40-14:30	Language Development	Specialized Elective B	Specialized Elective B	Specialized Elective A	Specialized Elective A		
14:30- 14:40	Break						
14:40- 15:30	Specialized Elective A	Specialized Elective A	Study Club	Social Program	Specialized Elective B	Study Club	Social Program
15:30-15:40	Break	Break	Self-Study	Social Program	Break	Self-study	Social Program
15:40-16:30	Specialized Elective B	Specialized Elective A	Self-Study	Social Program	Specialized Elective B	Self-study	Social Program

Basic Core Program Course

20 Lessons + Study Club Optional.

Specialized Intensive Course

20 Lessons + 5 Lessons Specialized Elective A or 45 Lessons Specialized Elective B + Study Club Optional.

Specialized Super-Intensive Course

20 Lessons + 5 Lessons Specialized Elective A + 5 Lessons Specialized Elective B + Study Club Optional.

Build on your Basic (Core Program) Course with 5 or 10 specialized lessons per week and develop the specific linguistic skills you require. Students can upgrade their course from Basic to Specialized Intensive or Specialized Super-Intensive at any time by adding a Specialized (Elective) Class. A Specialized (Elective) Class can also be taken by itself as a stand-alone course (subject to availability).

Courses availability depends on demand.

North American Schools General English

Our General English courses are delivered in the morning.

Course Title	Course Description	Hours Per Week	Centres
Basic (Core Program) Course 20	Each language course is based on the Basic (Core Program) Course of 20 morning lessons per week. The course develops all aspects of your language competence in a personalized program coordinated by your core teacher.	2 - 52 weeks 20 x 50-minute lessons per week	All
Specialized Intensive Course 25 or Specialized Super-Intensive Course 30	Build on your Basic (Core Program) Course. The Specialized Intensive or Super-Intensive consists of the Basic Course and 5 or 10 specialized lessons per week respectively, allowing you to develop the specific linguistic skills you require.	2 - 52 weeks 25 or 30 x 50-minute lessons per week	All
Language Semester Program or Language Year Program	6, 9 or 12 months of Basic, Specialized Intensive or Specialized Super-Intensive Courses, which give you a program of optimal quality, duration and value.	24, 36 or 48 weeks of 20, 25, or 30 x 50-minute lessons per week	All
Cambridge Intensive or Super-Intensive Course	Allows you to combine 20 morning lessons studying Cambridge-specific material with 5 lessons per week in an afternoon Cambridge Exam preparation elective class and an additional 5 specialized lessons in fluency (Super-Intensive option).	8 - 12 weeks 25 or 30 x 50-minute lessons per week	All
IELTS Basic, Intensive or Super-Intensive Course	Our IELTS preparation course will help students prepare for the test through a combination of language skills training and test practice. It will help you become familiar with the structure of the test as well as teach you the necessary skills, vocabulary, and grammar to succeed.	2 - 52 weeks of 20, 25 or 30 x 50-minute lessons per week	All
Intensive or Super-Intensive Premier Course	The ideal course for combining class-based instruction with private lessons in a comprehensive program that focuses on your individual needs. It includes 2-3 private sessions per week plus 5 hours self-study in the Learning Centre.	2 - 52 weeks of 25 + 3 private or 30 + 2 private x 50-minute lessons per week	All

North American Schools Specialized (Elective) Class Options

Our specialized courses are delivered during the afternoons.

Title	Class Description	No. Of Lessons	Centres
General English (Fluency)	This class develops students' fluency and listening skills through communicative practice and reinforcement. Presentations, project work and cooperative tasks are used to further develop confidence in spoken English.	5 or 10	All
Academic Writing & Speaking	From sentence structure to writing comprehensive reports and oral presentations to formal debates, this class will give you the practice you need to achieve success at an academic level.	5	All
Business English / TOEIC	Our Business English curriculum combines the best in academic business knowledge with practice for everyday business situations. This elective also includes practice with the Test of English for International Communication (TOEIC).	5	All
Academic Reading & Writing	This class's integrated approach fosters the development of academic literacy and appropriate content development to build a solid foundation of academic language skills. Students will write formal essays, read and analyze fiction and non-fiction pieces, and improve their reading speed and comprehension.	5	All
TOEFL	Through regular assessment and exam practice, you will develop your skills so you can build confidence and be fully prepared for all parts of the exam.	5	All
Cambridge	With a range of material drawn from different levels (FCE, CAE and CPE), you will benefit from exam skills practice while gaining practical English knowledge at the level best suited to you.	5	All
IELTS	Our IELTS elective class will help you prepare for the test by using IELTS-specific materials, while improving your overall English language ability.	5	All

Our North American schools are run by Eurocentres.



University Pathway Program

Our University Pathway program provides a solid foundation in English Language for Academic Purposes in order to prepare you for study at one of our partner post-secondary institutions. You will have 48, 36, 24 or 12 weeks of English language training (Specialized Intensive or Specialized Super-Intensive Course) in which you will learn and develop your English and academic skills and be provided with the tools needed for success in a North American university or college. From beginning to end, our Pathway Coordinator will be there to provide information, support, guidance and counseling.

Pathway partner institutions in Canada:

- Acsenda School of Management
- Algonquin College
- Capilano University
- Corpus Christi College
- Dorset College
- Evergreen College
- John Casablancas Institute
- JRS College
- Lakehead University
- LaSalle College
- Laurentian University
- Royal Roads University
- Saint Mary's University
- Seneca College
- Sheridan College
- Sprott Shaw College
- Thompson Rivers University
- University of Regina
- Vancouver Film School

Pathway partner institutions in the USA:

- The Art Institute of San Diego
- Ashland University
- Humboldt State University
- MiraCosta College
- Palomar College
- Tennessee Tech University
- Westcliff University

Please note IELTS scores may be required for certain post-graduate and graduate programs



The safety and welfare of our students is our no.1 priority. We have systems in place to ensure that all students are safe and supported during their studies with us.

Our Student Welfare Commitments

1. All students have equal opportunities and protection from abuse regardless of:

- Age
- Disability
- Gender reassignment
- Marriage or civil partnership
- Pregnancy & maternity
- Race, racial origin or background
- Religion or belief
- Sex
- Sexual orientation

2. We will provide academic and social programmes appropriate for students' age, maturity, and the location of the school. These will encourage linguistic, social and cultural development.

3. We promote tolerance, understanding, positive interaction and respect for privacy and possessions.

4. We encourage students to develop a sense of responsibility for themselves and for others.

5. We have a dedicated person (the Safeguarding Lead) working in the company who has overall responsibility for safeguarding and welfare issues.

6. We raise awareness of student protection through regular training.

7. We make it clear to all staff that they share the responsibility to report any concerns to the Safeguarding Lead.

Our Staff

We choose our staff for their ability to work with people from different cultures and backgrounds as well as for their professional skills; we are also used to helping people with a wide range of personal or study-related issues. We have regular training for all of our staff in these areas.

Risk Assessments

Our activity and excursion programmes are very carefully organised and planned. Student safety is of the utmost importance; we carry out regular detailed risk assessments for all our activities and excursions, wherever they are held.

Arrival

We insist all junior students (under 18) are met at their point of arrival – by one of our staff or by a family member who may be living in the UK. Once at their accommodation, all students are given a 24/7 emergency contact, an induction, and a tour of the school and local area.

For our North America schools, all junior students are required to book airport pick up service and are met by a driver.

Medical And General Insurance

In Britain, free medical treatment is available through the National Health Service (NHS) to all EU students and students from countries with reciprocal health agreements. Students who are not covered by the NHS are advised to take out medical insurance before leaving their home countries. We also advise students to take out individual personal insurance to cover personal belongings before they come to the UK.

In North America, all students must provide medical insurance documents that show that they are covered by a plan. Students may buy coverage at the school.

All schools and seasonal centres have staff trained in First Aid and first aid kits are available on site, as well as links with local doctors, dentists and hospitals.



“**I like this school** – it has been a unique experience and I have improved my English.”

Chiara, 21 years old - Italy



Welfare Checklist

- ✓ Dedicated Safeguarding Officer in each location.
- ✓ Named staff who students can speak to if they have any problems (we have staff who speak many different languages if there is a need).
- ✓ Emergency 24/7 number for all students given on the first day.
- ✓ Students under 18 who are not members of study groups have to sign in every day when they arrive at school – we follow up any absences or lateness.
- ✓ Social programmes are always supervised by a trained member of staff and where we use external organisers we check them thoroughly.
- ✓ We have emergency next-of-kin details for all students and Group Leader phone numbers for all groups; these are always accessible to the person answering the 24/7 phone.
- ✓ All students receive an induction to the school and the local area. At this induction we explain the rules of the school and UK laws which are relevant to their age group. We also give advice on personal, road and transport safety.
- ✓ We have policies on many aspects of student wellbeing and safety which are regularly updated and available for viewing.

Our students enjoy a range of fun, interesting activities and trips during their stay with us, all run by enthusiastic and dedicated social staff.

Our social programmes are created to make the most of each unique city, and offer you the opportunity to make friends with other students from around the world. They also help you put your new English language skills into practise in real life!

Our social programme teams work closely with local entertainment and cultural organisations to help provide a range of activities to suit all interests, including museums, theatres, clubs and music venues. We also organise day trips to other destinations throughout the UK and Europe. These include Brighton, Bath, Stonehenge and Cambridge.

Top Things To Do

Museums and Galleries. There are a number of free entrances to museums and galleries in all our locations including the British Museum, the National Gallery, the Science Museum, Hove Museum and the Ashmolean Museum in Oxford.

Theatres. Top shows include *The Lion King*, *Wicked* and *The Phantom of the Opera*, all playing in London's West End; while sitting in the round of Shakespeare's Globe offers a different kind of theatre experience.

Attractions. Other attractions in our locations include punting in Oxford, visits to the Toronto Zoo, Niagara Falls, Madame Tussauds and the London Eye, and walking tours to other famous landmarks.

Sports. Sports include five-a-side football, beach volleyball, ice skating and paintballing.

‘The social programme for all the students is very well organised and interesting.’

Jelena, 35 years old - Croatia



Oxford International runs English programmes in the UK, Canada and the US, with dedicated centres designed to help you achieve your language goals.

Where Can I Study?

Locations:



UK:

Oxford, London Greenwich, Brighton



Canada:

Toronto and Vancouver



USA:

San Diego, California

Helping You Achieve Your Goals

Studying a language abroad is a great experience - and much more effective than time spent only in a classroom. We can help boost your progress in English with a package that will work with you every step of the way - from arranging arrival transfers and organising accommodation, to offering a varied social programme of activities and trips.

The Right Course For You

Whether you want to simply improve your English skills, develop professionally or go on to more academic study, we have a range of courses to suit your needs. From General English and Exam English to English with specialisms and long-term study programmes, we can help build a programme that is right for you.

Comprehensive Support

Our friendly and enthusiastic staff and teachers are there to guide you through your entire course, from arrival, induction and English test, right through to your tutorials and progress assessments.

Before you enrol, we will discuss your needs with you and any additional support you require. Once you arrive at the school, you will have an initial test along with a consultation on your level of English and the particular language programme that suits you. Progress is then measured fortnightly with assessments, and also monitored through the student tutorial system.

English In Real Life

You will spend more time outside the classroom than in, so participating in our varied and fun social programmes is the ideal way to practise your English with international friends. At the same time, you can explore the local culture, enjoy local life and experience new places on organised excursions.



CANADA

Vancouver



Harbour Centre

Toronto



CN Tower

UNITED STATES

San Diego



Buildings in San Diego



Old Royal Naval College



Radcliffe Camera



Brighton beach

ENGLAND

Oxford

Greenwich

Brighton



London Greenwich

Study English in Greenwich – a picturesque Royal Borough of London.

Take the chance to study in the heart of one of London's world heritage sites, with its own unique character, parks and historic buildings.

London Greenwich is our flagship language school. We provide a high standard of education for our students, with friendly and supportive teachers. Here, you will become part of a vibrant student community in one of the most beautiful parts of London.

*At busy times we may use classrooms outside the main building. These will be within easy walking distance and of a similar standard to those in the main school.

Key Info



Dates
YEAR-ROUND

Key student figures

- 225 student capacity.
- 15 students per class.
- 21-25 average age.



Facts and Figures

- 99% approval rating from departing students.
- Fantastic international mix of students.
- Vibrant student community with other universities and colleges nearby.
- Awarded strengths in management, welfare and academics by the British Council in our last inspection.



Facilities

- Modern classrooms.
- Two computer suites.
- Two social rooms and a hot drink machine.



Travel

- 15 minutes by train to central London.
- London Zone: 2/3.
- Served by many major bus routes, overground trains and the Docklands Light Railway.



Top Nationalities

- Chinese, Greek, Italian, Russian, Saudi, Spanish and Ukrainian.



Location

- Stepping off the train into the historic town of Greenwich is like stepping back in time – which is perhaps why so many films have been made here, including Pirates of the Caribbean, Sherlock Holmes and Les Miserables. Greenwich has its own unique character – with its cafés, pubs, shops, market, comedy club, jazz bar, and historic buildings all surrounding the majestic Greenwich Park at the heart of the town.
- The school is situated just a few hundred metres away from the railway station. Greenwich is just 15 minutes by train from central London, so you can enjoy everything the city has to offer – from nightclubs and theatres to museums and galleries.



Students in the London Greenwich school



View of The Queen's House in Greenwich Park



‘**Everything was great** and I made some good friends. It has been an excellent experience.’

Selena, 28 years old - Croatia

Student break-out area in the London Greenwich school

Accommodation

Homestay Students can experience life in a British home, getting to know the local culture and customs. We work with trusted and experienced agencies offering accommodation in line with British Council and English UK guidelines. All families are experienced in caring for EFL students and are located with easy reach of the school.

In a Homestay you can have your meals prepared, either breakfast and dinner or just breakfast.



Lewisham Residence bedroom

Lewisham Residence The Lewisham residence is a new property located right next to Lewisham station. In this high-quality accommodation, all rooms and communal areas are decorated to a superb standard.

Rooms: Single

Facilities: Shared/en-suite

- Wi-Fi Internet access.
- Study desk and chair.
- Bed linen provided but not towels.
- Cleaning of the room only before arrival.
- Self-catering facilities.
- Laundry facilities.
- Reception & 24hr security.
- Gym on site.



McMillan Building

McMillan The McMillan Student Village is located within walking distance of Greenwich, and also within easy reach of our London school.

Rooms: Single/twin/double

Facilities: Private kitchenette/en-suite

- Wi-Fi access (charged).
- Study desk and chair.
- Bed linen provided.
- Electric heater.
- Laundry facilities.
- Reception & 24hr security.



Lounge in Superior Shared House

Superior Shared Houses These cosy and comfortable shared houses are spread across 2-3 floors and each property has 5-7 bedrooms.

Rooms: Single/double/twin

Facilities: Shared/en-suite

Rooms: Single/double/twin

Facilities: Shared/en-suite

- Shared lounge with TV & DVD.
- Free Wi-Fi Internet access.
- Fully equipped shared kitchen.
- Washing machine, microwave, fridge and freezer.
- Cleaning of communal areas.
- Linen provided.



Time To Accommodation

- Homestay – average 30 mins by bus.
- Residences – easy walking distance or approximately 10 minutes by bus.

London Greenwich Map





Oxford

Learn English in the inspiring and historic city of Oxford.

Known as the 'City of Dreaming Spires', Oxford is not only home to one of the oldest universities in the world, steeped in history and culture, but is also a bustling modern cosmopolitan city.

Our Oxford school is located in the very centre of the city, so students are immersed in Oxford life. Our dynamic and highly enthusiastic teachers are committed to providing courses that reflect the city's famed academic standards.

*At busy times we may use classrooms outside the main building. These will be within easy walking distance and of a similar standard to those in the main school.

Key Info



Dates
YEAR-ROUND

Key student figures

- 135 student capacity.
- 15 students per class.
- Average age of 25.



Facts and Figures

- 99% recommendation rate based on student feedback.
- Overall satisfaction 4.7/5 (based on student feedback).
- Awarded strengths in staff management, quality assurance, academic management, course design, learner management, teaching, care of students, leisure opportunities & Care of Under 18s by the British Council.
- Exceeds expectations in all UK Independent School Inspectorate inspections.
- School is homely with a close-knit atmosphere.
- Outstanding student feedback on student experience and language progress.



Facilities

- 7 modern classrooms.
- Computer room.
- Wi-fi enabled.



Travel

- Town centre to train station – 10 mins.
- Homestay – average 30 mins by bus.
- Residences – easy walking distance.



Top Nationalities

Chinese, Greek, Italian, Russian, Saudi, Spanish and Ukrainian.



Location

Aside from the beautiful buildings of Oxford University, there are many other buildings worth visiting while in town, including the Radcliffe Camera, the Ashmolean Museum and the Bodleian Library. Students can also climb to the top of the Carfax Tower for a great view of the Oxford skyline.

Our Oxford school is just a few minutes from local amenities and the hustle and bustle of Central London is around an hour away.



Exterior shot of the Oxford school



Students near University Church of St Mary the Virgin

‘**The lessons** are very interesting and the classes are comfortable. All the staff and teachers were friendly and supportive.’

Angelina, 22 years old - Russia

Accommodation

Homestay Students can experience life in a British home, getting to know the local culture and customs. We work with trusted and experienced agencies offering accommodation in line with British Council and English UK guidelines. All families are experienced in caring for international students and are located within easy reach of the school.



Stanley Road, Oxford Stanley Road is a beautiful house with nine luxurious en-suite rooms. Each room is decorated to a high standard and with a pleasant kitchen/dining area where students can enjoy cooking and socialising together. The house is located in a quiet area, close to the city centre and Cowley Road where there are lots of bars/restaurants/shops.

Rooms: Single

Facilities: En-suite

- Unlimited free Wi-Fi access.
- En-suite shower room.
- Laundry facilities.
- Bed linen provided.
- Comfortable kitchen/dining area.
- Warden on site.
- Weekly communal cleaning.
- Study desk and chair.
- Self-catering facilities.



Circus Street, Oxford Circus Street has five bedrooms and is decorated and maintained to a very high standard. There is one en-suite room, while the other four rooms share a bathroom. There is a large kitchen/dining area where students can enjoy cooking and socialising together. Circus Street is located close to central Oxford and the Cowley Road, both bustling centres full of shops and bars.

Rooms: Single

Facilities: 1 en-suite/4 shared

- Unlimited free Wi-Fi access
- All utility bills included.
- 1 en-suite shower room/4 shared.
- Laundry facilities.
- Linen provided.
- Comfortable kitchen/dining area.
- Weekly communal cleaning.
- Study desk and chair.
- Self-catering facilities.



Hodges Court, Oxford Hodges Court is located in the heart of historic Oxford, just a 10-minute walk from the school and the town centre. The house is modern and has recently been refurbished.

Rooms: Single

Facilities: Shared

- Free Wi-Fi Internet access.
- All utility bills included.
- Study desk and chair.
- Linen provided.
- Self-catering facilities.
- Cleaning of communal areas.
- Laundry facilities.



The Mews, Oxford (summer only) A university residence located a short bus-ride from the school and Oxford City Centre. The building is modern and well maintained and offers en-suite rooms. There is a communal kitchen to share with other students.

Rooms: Single

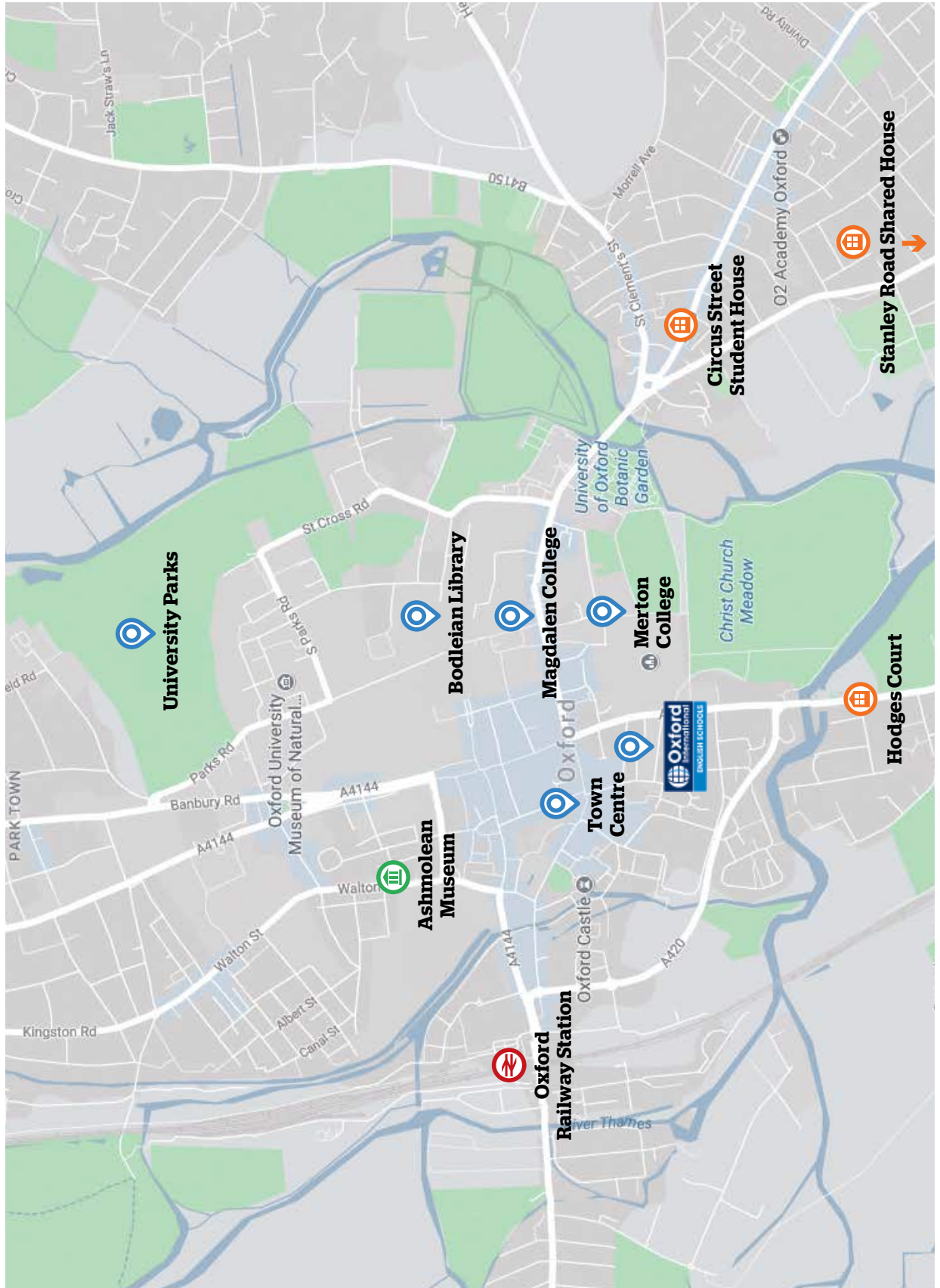
Facilities: Shared

- Shared kitchen facilities.
- Laundry facilities provided.
- Linen provided.
- Comfortable kitchen/dining area.
- Weekly communal cleaning.
- Study desk and chair.
- Self-catering facilities.

Time To Accommodation

- Homestay – average 30 mins by bus.
- Residences – easy walking distance.

Oxford Map





Brighton

Study in a vibrant seaside town and be part of a diverse student community.

Brighton is a popular seaside city on the south coast of England, boasting stunning beaches, great views and lots of culture.

Located in a traditional Brighton Regency building, our school is right in the heart of the city, surrounded by shops, cafes and restaurants. We are just three minutes' walk from the beach, local entertainment and shopping, and twenty minutes from the station - where you can jump on a train and be in London in just under an hour.

*At busy times we may use classrooms outside the main building. These will be within easy walking distance and of a similar standard to those in the main school.

Key Info



Dates

YEAR-ROUND

Key student figures

- 110 student capacity.
- 15 students per class.
- Average age of 23.



Facts and Figures

- A beautiful five-storey Regency building.
- 99% recommendation rate based on student feedback.
- High level of personalised attention.
- Located in one of the sunniest places in the UK.



Facilities

- 9 modern classrooms.
- Wi-Fi and computer facilities.
- Social room.



Travel

- Town centre: 10-minute walk.
- Beach: 200m.
- Central London is 1 hour by train.



Top Nationalities

- Chinese, Greek, Italian, Russian, Saudi, Spanish and Ukrainian.



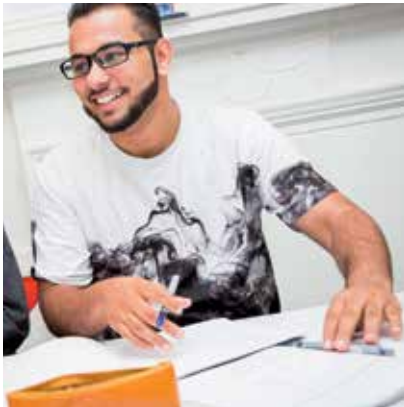
Location

The city is buzzing all year round, has two universities and an arts festival that's one of the biggest in the UK. Students can enjoy a stroll down Brighton Pier whilst taking in stunning views of the beach and the south coast. In addition, the numerous parks and gardens offer lots of opportunities for outdoor activities.

The Lanes offer students a vintage shopping experience, while main attractions include the Royal Pavilion, Brighton Marina and the recently opened i360 observation tower.



Exterior of Brighton school



Social room in the Brighton school



Students enjoying ice-cream on Brighton Beach

“I’m proud of my school.
I spent such a wonderful time here and improved my English. I strongly recommend this amazing school.”

Mustafa, 29 years old - Turkey



Accommodation

Homestay Students can experience life in a British home, getting to know the local culture and customs. We work with trusted and experienced agencies offering accommodation in line with British Council and English UK guidelines. All families are experienced in caring for international students and are located with easy reach of the school.



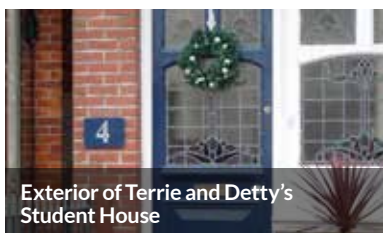
Brighton City Centre Residence kitchen

Brighton City Centre Residence The Brighton City Centre Residence is a new state-of-the-art residence with rooms finished to a high standard. It is located in the heart of the city, just a short walk from the Brighton school.

Rooms: Single

Facilities: En-suite

- Double bed.
- High speed Internet.
- Linen/towels replaced weekly.
- Combined lounge & kitchen.
- Coin-operated laundry room.
- Ground floor cafe/lounge.
- Key card entry.
- CCTV & 24/7 reception.



Exterior of Terrie and Detty's Student House

Terrie and Detty's Student House This lovely, recently renovated student house is located in the centre of Hove and is only a 15-minute walk to the Brighton school.

Rooms: Single/Twin

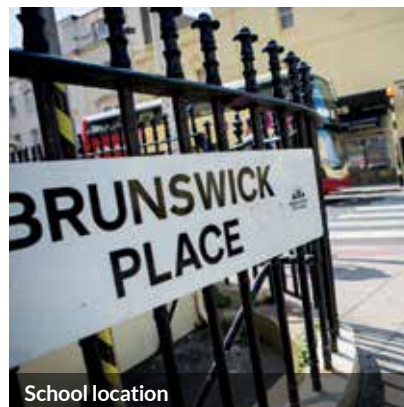
Facilities: Shared

- Free Wi-Fi Internet access.
- Linen / towels provided & replaced weekly.
- Free laundry facilities.
- Daily cleaning of communal areas.



Time To Accommodation

- Homestay – average 30-40 minutes by bus.
- Residences – easy walking distance (average 15-20mins).



School location





Toronto

Toronto is a safe, vibrant and cosmopolitan city with exciting art and cultural opportunities.

Our Toronto school is in the heart of the trendy Queen Street West Entertainment District; home to great shopping, the CN Tower, movie theatres, cafés and clubs, as well as the Rogers Centre, hosting major league sporting events and concerts.

Key Info



Dates

YEAR-ROUND

Key student figures

- 280 - 300 student capacity
- 12 -13 students average per class
- 23 average age



Official IELTS Test Location

Our Toronto school is run under Eurocentres.



Facts and Figures

- Individualized attention to student progress and plan.
- Exciting and safe cosmopolitan city.
- School located in the Entertainment District, only a few minutes walk from the CN Tower.
- School renovated and expanded in 2017.
- 99.4% student satisfaction based on student feedback.
- Fantastic international mix of students.
- Vibrant student community.
- Weekly meeting to adapt to students' needs.



Facilities

- 20 large classrooms.
- Student lounge, learning centre, computer lab, interactive whiteboards.
- Free Wi-Fi.



Travel

- CN Tower: 10 mins.
- Eaton Centre: 20 mins.
- Union Station: 15 mins.



Top Nationalities

Brazilian, Mexican, Japanese, Korean, Saudi Arabian, Russian and Colombian.



Location

The fifth largest city in North America, Toronto is a safe, cosmopolitan city with an exciting nightlife, excellent restaurants and exceptional art, music and cultural opportunities. Spacious parks, wonderful beaches, an excellent public transit system and cleanliness all make Toronto a model city. Plus the world famous Niagara Falls is close by.



External view of the building



“ **I would recommend** this school to a friend because the classes are very good. I hope to return soon!”

Alicia, 25 years old - Peru



Accommodation

Homestay Qualified and welcoming families provide students with private rooms, a place to study and the experience of living with a North American family. Students have the option of full or half board. We adhere to a policy of one student per language per home. All of our host families have been carefully selected and counselled on welcoming international students into their families. We carefully monitor our Homestay program to guarantee that all students have positive experiences and during the first week of school alone, we check in with students on three occasions to ensure that they are happy with their family.

Alexandra Hotel The Alexandra Hotel residence is located in the heart of downtown Toronto. The area is full of trendy restaurants, shops and cafés with easy access to public transportation.



Time To Accommodation

- Homestay - average 45 - 60 mins by bus
- Residences - easy walking distance (15 mins)



Reception desk in the Toronto school

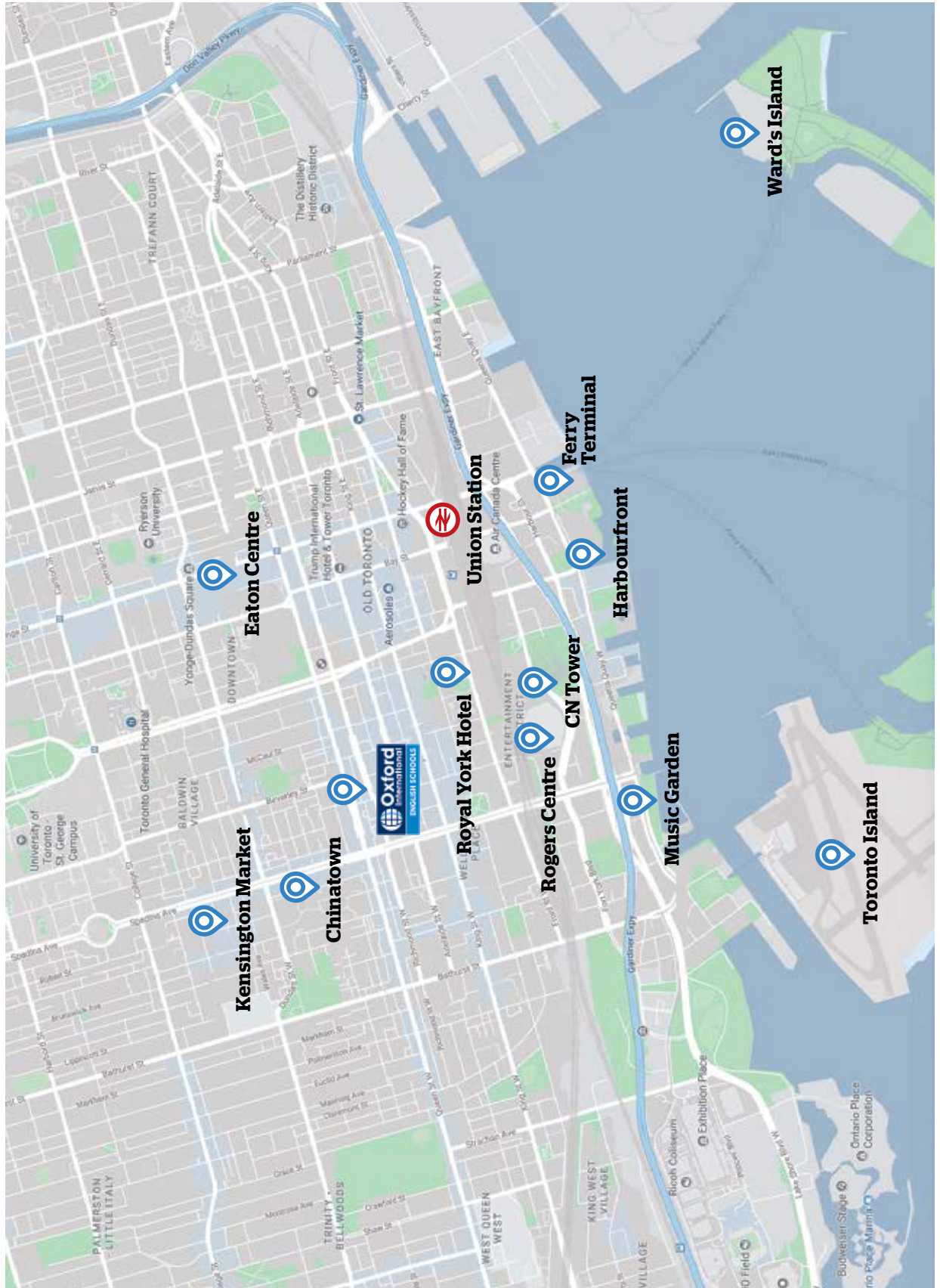


Interactive classes with Smart Board



One-to-one tutorial in Study Club

Toronto Map





Vancouver

Learn English on Canada's west coast in a city that is surrounded by incredible landscape.

Conveniently located in the heart of the business district, our school in Vancouver is a fully equipped modern facility only a few minutes away from an abundance of shops, restaurants and all major transit services. The school is located right next to Canada Place, where students can enjoy spectacular views of the city and the Coast Mountains.

Key Info



Dates

YEAR-ROUND

Key Student Figures

- 280 - 300 student capacity.
- 12 -13 students average per class.
- 23 average age.

IELTS

Official IELTS Test Location

Our Vancouver school is run under Eurocentres.



Facts and Figures

- Individualized attention to student progress and plan.
- School located in the heart of downtown Vancouver.
- Surrounded by the ocean and mountains.
- 99.6% Student satisfaction.
- Fantastic international mix of students.
- Vibrant student community.
- Weekly meeting to adapt to students' needs.



Facilities

- 21 large classrooms.
- Student lounge, learning centre, computer lab, interactive whiteboards.
- Free Wi-Fi.



Travel

- Stanley Park: 15 mins.
- Pacific Centre Mall: 5 mins.



Top Nationalities

Japanese, Korean, Brazilian, Mexican, Saudi Arabian, Colombian and Russian.



Location

Vancouver is the third most important location for the North American film industry and is surrounded by a landscape that is worthy of a film itself. Surrounded by the sea and mountains and with a mild climate, Vancouver continually ranks among the world's best places to live. It offers an enormous range of winter, water and alpine sports. You can relax at one of Vancouver's many beaches, wander through historic Gastown or explore one of its 100 parks.



The Vancouver school building

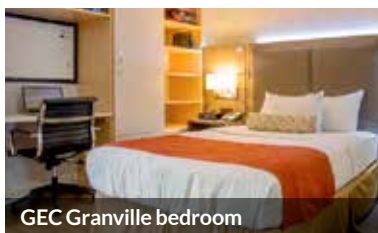


Vancouver school classroom



T Accommodation

Homestay Qualified and welcoming families provide students with private rooms, a place to study and the experience of living with a North American family. Students have the option of full or half board. We adhere to a policy of one student per language per home. All of our host families have been carefully selected and counselled on welcoming international students into their families. We carefully monitor our Homestay program to guarantee that all students have positive experiences and during the first week of school alone, we check in with students on three occasions to ensure that they are happy with their family.



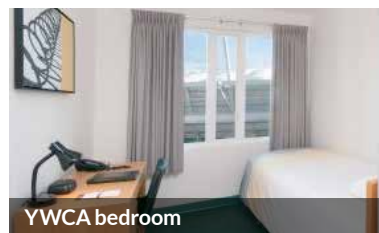
GEC Granville bedroom

GEC Granville GEC Granville is conveniently located by the Yaletown district, steps from the Granville Entertainment District and minutes away from Granville Island and Stanley Park. All guest rooms are thoughtfully furnished featuring flat screen TVs, microwaves and mini fridges. Complimentary high-speed wireless internet is available in all suites and housekeeping is done weekly. There is also a workout room open 24 hours equipped with a treadmill, stationary bicycles, elliptical, free weights and separate saunas for men and women.



Viva Suites bedroom

Viva Suites Viva Suites is located within walking distance from restaurants, shops, Pacific Centre Mall and the entertainment district. It consists of 1 to 6 bedroom apartment suites that are beautifully furnished and decorated. Every apartment suite is complete with a full sized kitchen with appliances, living room, dining room and laundry room. Complimentary high-speed wireless internet is available in all suites and housekeeping is done weekly. There is also a workout room open 24 hours equipped with a treadmill, stair climber, stationary bicycle, universal gym, free weights and a sauna.



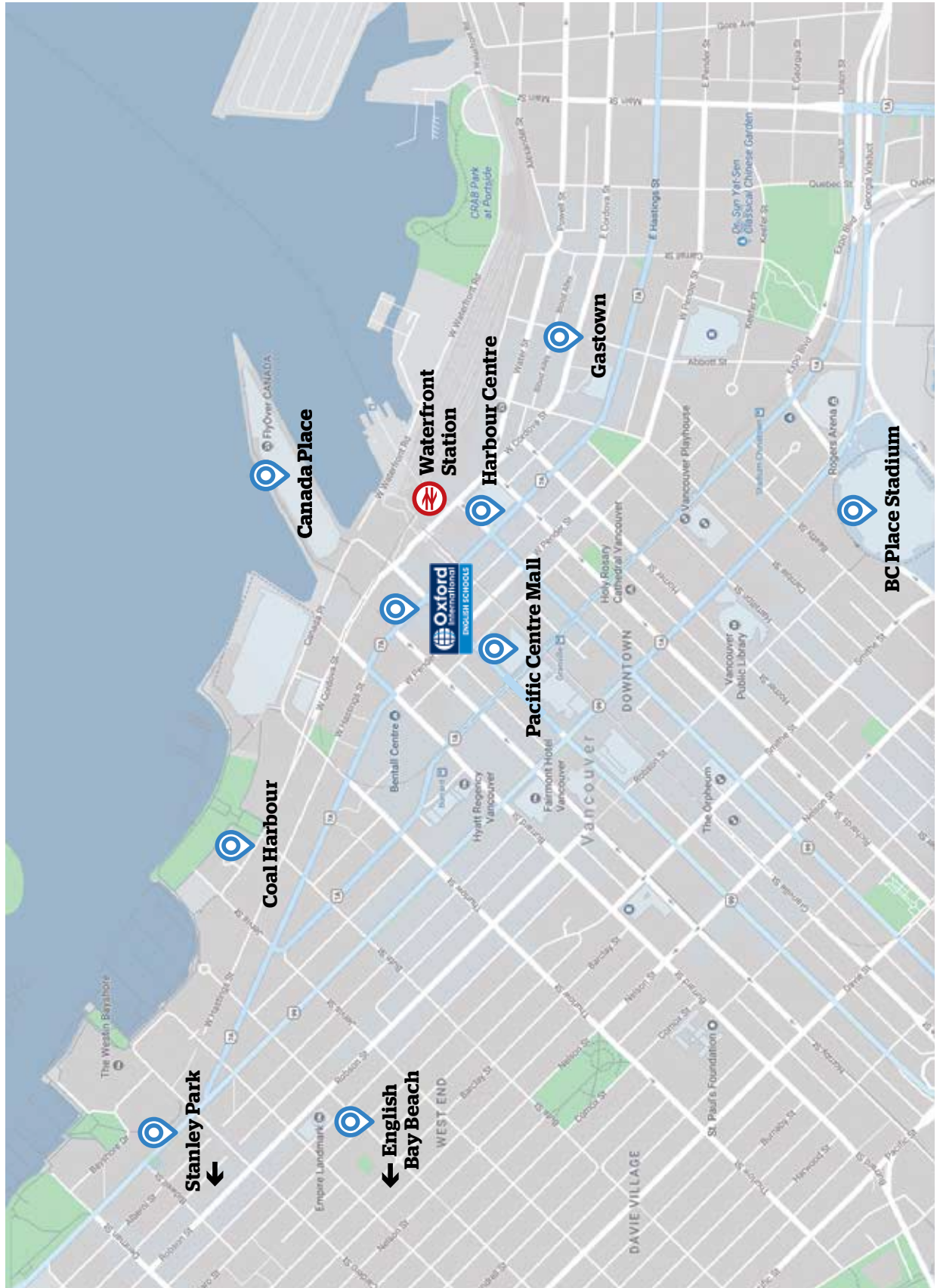
YWCA bedroom

YWCA The YWCA's location is ideal: at the doorstep of Vancouver's entertainment and sports scene. Or stroll down Robson Street to the heart of downtown discovering trendy shops and restaurants. There are mini-refrigerators and telephones (extra charge applies) in every room, three television lounges, and shared kitchen facilities.

Time To Accommodation

- Homestay – average 30 - 50 mins by bus.
- Residences - easy walking distance (15 mins).

Vancouver Map





San Diego

Study English in one of the most iconic regions of the world: California.

The school is located in the heart of downtown San Diego, in the vibrant Gaslamp Quarter district, within walking distance of the waterfront, Horton Plaza, the large downtown mall, dozens of great restaurants, nightclubs, theatres, and the city's major league baseball stadium.

Key Info



Dates

YEAR-ROUND

Key student figures

- 180-200 student capacity.
- 12 -13 students average per class.
- 25 average age.

IELTS™

Official IELTS Test Location

Our San Diego school is run under Eurocentres.



Facts and Figures

- School located right in the vibrant Gaslamp Quarter.
- Sunny destination allowing a lot of outdoor activities.
- Custom-built educational facility with state-of-the-art technology, built in 2015.
- Rooftop patio for student use with a spectacular view.
- Individualized attention to student progress & plans.
- 99.4% student satisfaction.
- Weekly meeting to adapt to students' needs.



Facilities

- 14 large classrooms.
- Student lounge, learning centre, computer lab, interactive whiteboards.
- Free Wi-Fi.
- Rooftop Patio.



Travel

- San Diego Zoo: 15 mins.
- USS Midway Museum: 15 mins.
- Balboa Park: 30 mins.



Top Nationalities

Brazilian, Russian, Saudi Arabian, Japanese, Korean, Italian and German.

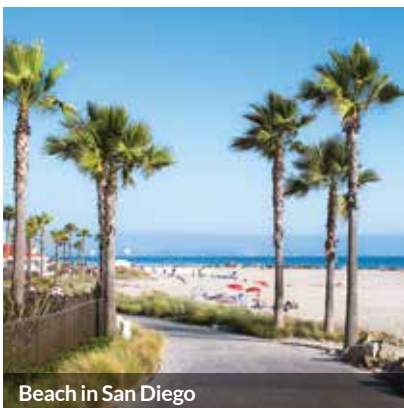


Location

San Diego is quickly becoming the primary destination for travellers from throughout the world. And why not? With its near-perfect year-round climate, picturesque beaches, stunning landscape and world-class restaurants and cultural venues, San Diego is the ideal location for international students wanting to experience American culture in a safe, friendly city. Disneyland and the attractions of Los Angeles to the north as well as Mexico to the south are short drives away.



The San Diego school building



Beach in San Diego



“I believe **Oxford International is the school to be at**, for any nationality and culture, with its professional staff and quality of education.”

Mohamad, 17 years old - Iran



Accommodation

Homestay Qualified and welcoming families provide students with private rooms, a place to study and the experience of living with a North American family. Students have the option of full or half board. We adhere to a policy of one student per language per home. All of our host families have been carefully selected and counselled on welcoming international students into their families. We carefully monitor our Homestay program to guarantee that all students have positive experiences and during the first week of school we check in with students on three occasions to ensure that they are happy with their family.

Bay Pointe Apartments

The Bay Pointe Apartments are located in beautiful Mission Bay, a part of Pacific Beach which is one of the most popular areas of San Diego. It is only a 30-40 minute bus commute to downtown San Diego and La Jolla, and only about a 15-20 minute bus commute to Old Town San Diego. Everything you need you can find within walking distance including restaurants, bars, grocery stores, pharmacies and malls. Complex amenities include: Swimming Pool, Basketball and Tennis Courts, Jacuzzis, BBQ area, Fitness Center, Business Centre with computers and printers, and much more. Free exercise classes such as yoga and tennis are also offered on site. Two-bedroom, two-bathroom fully-furnished apartments are available.

Pinnacle On The Park Apartments

Pinnacle on the Park Apartments are smoke-free high-rise apartments in San Diego and are nothing short of magnificent. It is the ideal place for international students in downtown San Diego. Interiors are comfortable, yet modern, with spacious balconies and expansive windows to maximize panoramic views, some stretching from the Coronado Bridge to Point Loma. Pinnacle on the Park Apartments were designed to deliver a lifestyle of convenience; this 30-story high-rise has 24-hour concierge and on-site management and maintenance service.

The apartments feature two large bedrooms, a living room, a modern kitchen and two bathrooms. Each bedroom can accommodate two students. Each apartment has a balcony or a patio for outdoor enjoyment.

Vantaggio State Street

Vantaggio State Street in San Diego lies in the heart of Little Italy, a charming and trendy place lined with sidewalk cafes and numerous restaurants. Your new home here is just blocks away from Downtown and the harbor, and only minutes away from the Gaslamp Quarter and the San Diego airport.

Amenities

- 24-hour check-in/Controlled access entry
- Free wireless internet access
- Community kitchen and dining
- Laundry facilities
- Choice of either private or shared rooms

All rooms include:

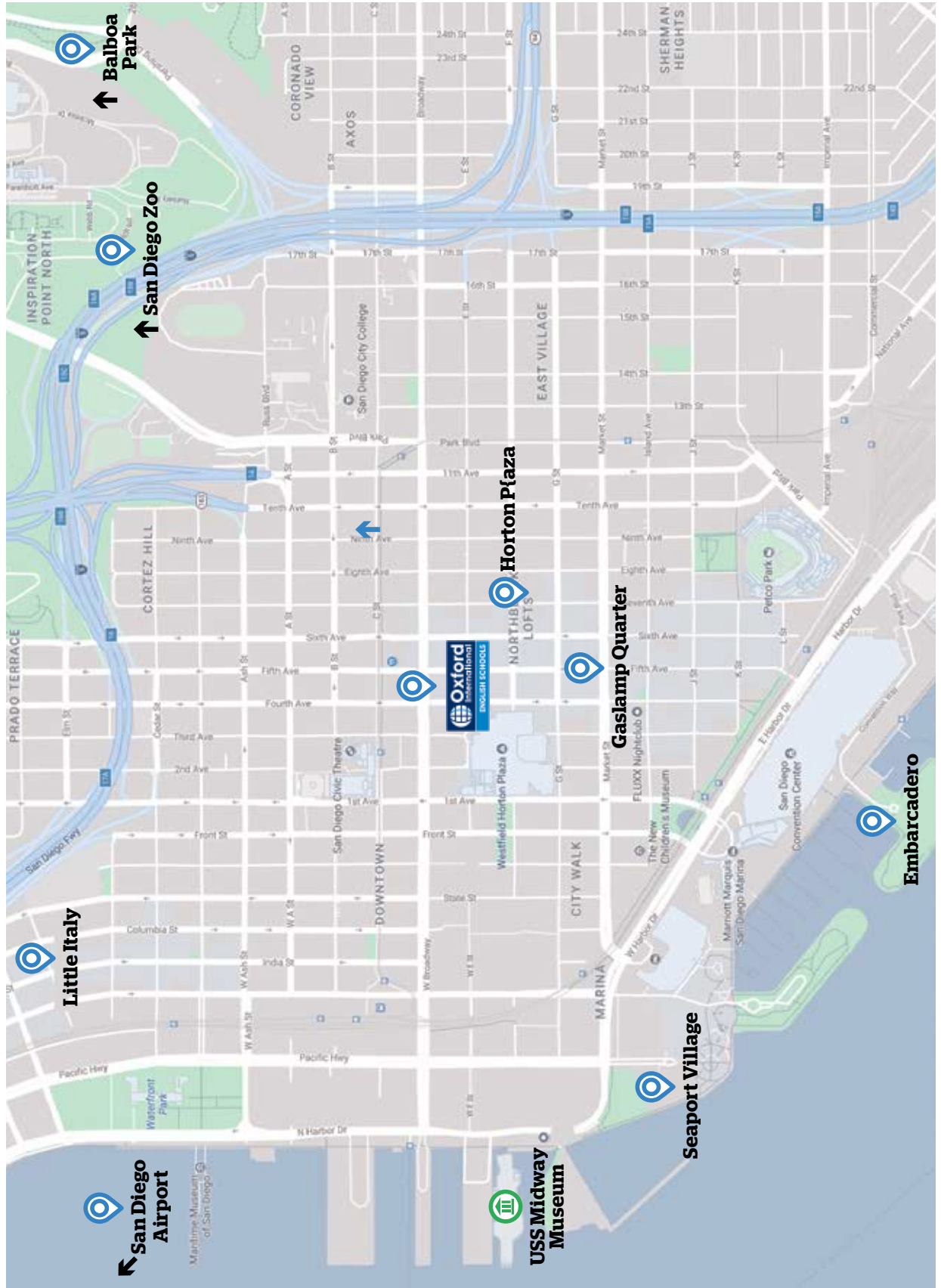
- Cable TV
- Mini refrigerator
- Microwave
- Telephone – free local calls
- Study desk and chair
- Dishes and silverware
- Towels and linens



Time To Accommodation

- Homestay – up to 1 hour by public transport.
- Residences – easy walking distance (15 - 20 mins).

San Diego Map





Take Your Studies Further

As well as our dedicated language schools, we also provide high-quality teaching through our Sixth Form colleges, home tuition service, educational tours and university partnership programmes. Our courses help over 25,000 UK and international students achieve academic success every year.

We always put our students and their goals at the heart of everything we do. The following pages show some of the options available for students who would like to raise their English and academic skills to the highest possible level.



Oxford International student

Oxford Year-round Academic Courses

Year-round Academic Courses In Oxford For 14-19 Year-olds



D'OVERBROECK'S

d'Overbroeck's Oxford is an independent day and boarding school in north Oxford which teaches years 7-11, has a Sixth Form College and delivers IGCSE and A-Level courses to international students.



www.doverbroecks.com



OXFORD
TUTORIAL COLLEGE
INDEPENDENT SIXTH FORM

Oxford Tutorial College (OTC), specialises in A-Level and GCSE tuition for those intending to attend a good British university.

Both colleges are located within the city of Oxford.

www.oxfordtutorialcollege.com

Homelingua Home Tuition

Living And Learning In The Home Of A Professional Teacher



Bucksmore
HOMELINGUA

Learn English while living at the home of our experienced and qualified teachers in the United Kingdom and Ireland. You can study English, Exam preparation, specialised courses and School Subjects (Maths, Science, iGCSE, A-Levels).

- Courses are personalised based on your learning needs.
- Develop your confidence and conversation skills in English.
- All teachers are regularly inspected and observed.
- Progress is monitored throughout the course.



www.homelingua.com

Oxford International Teacher Training

Teach English As A Foreign Language



We offer a wide range of training products for both individuals and groups with different levels of teaching experience. Whether you're starting your career, or looking to take it to the next step, our practical courses include many activities that can be used in your classes, and can lead to internationally recognised qualifications. Our courses include:

- Trinity College London Cert TESOL – for people with no teaching experience who want to get started (C1 level minimum).
- Trinity College London Dip TESOL – for experienced English language teachers (C1 level minimum).
- Cambridge Teacher Knowledge Test courses – for teachers working at schools, colleges, or universities, teaching English or using English to teach their subjects (B2 level minimum).
- Oxford International tailor-made programmes – courses where the content is written specifically for your group, focusing on their professional development goals.



www.oxfordinternationalteachertraining.com

University Partnerships

Embedded International Colleges At Prestigious UK Universities

The chance for international students to study at a prestigious UK university. With our university partners, we establish on-campus Embedded Colleges where students study integrated bachelor's programmes in a range of subjects.

Bangor University WALES



De Montfort University LEICESTER



University of Bedfordshire LONDON



University of Dundee SCOTLAND



www.oxfordinternational.com/academic-studies/university-pathways/



LIPC student graduating

Thank you for
taking the time
to read our
brochure for Adult
English language
programmes.
We look forward
to hearing
from you.

Oxford International Education Group is a unique accredited education provider with over 25 years' experience in international education and operations in the UK, Canada and the US.

We have an extensive portfolio of educational programmes.

Additional opportunities include:

- **English Language for junior learners**
- **Year round short stay group English programmes**
- **Educational Tours**

Visit our website to learn more:

www.oxfordinternational.com



Head office 259 Greenwich High Road SE10 8NB

+44 (0) 208 293 1188

info@oxfordinternational.com

oxfordinternationalenglish.com