



**Glhee**

**Global Language  
Education Experience**

YOUR FUTURE IN  
**SPANISH**

# EXPERIENTIAL SPANISH LEARNING COURSE



**[www.glhee.com](http://www.glhee.com)**  
**[info@glhee.com](mailto:info@glhee.com)**  
**#holaglhee**

# ABOUT US



Glhee is born from the experience of a woman who begins to travel the world from a very young age and knows different cultures and languages.

At age 29 with more than 30 countries visited and dominating 3 languages decided to undertake a Spanish language school with a revolutionary teaching methodology, which integrates the academic, cultural and social responsibility of her country, **Colombia**.

**This Colombian woman discovers that her language and culture is a treasure**

that many people want to discover, the language is full of ancestral wealth, amusing words, friendly, generous and loving, just like its people.

With more than 400 million native speakers, according to Ethnologue, Spanish is the second most commonly

spoken language in the world after English. For many people, developing a deeper understanding of Hispanic culture is becoming more and more important. There is no more certain way to gain this insight than to learn to speak Spanish in a cultural environment like **Colombia**. It is considered a diverse country given its culture, geography, and rich history making it a unique and genuine travel and learning destination. If you are really looking for a special and unique place to learn Spanish, come and start your unforgettable experience with Glhee.

Glhee is a Global Language education experience based in Bogotá, the capital of Colombia, which offers high quality Spanish educational programs, from weekly courses to study abroad programs in **Colombia**. Based on the excellence and constant innovation with the mission to generate 100% cultural immersion experiences in Spanish speaking country.

[www.glhee.com](http://www.glhee.com)  
[info@glhee.com](mailto:info@glhee.com)



# WHY CHOOSE US

Simple Reasons

[www.glhee.com](http://www.glhee.com)

[info@glhee.com](mailto:info@glhee.com)



**Glhee**



## Exclusive and Unique location

We are in the heart of a vibrant city, Bogotá. You will not get bored anytime.



## Professional teachers

Our staff its high prepare to help you in every situation and in the process of learning.



## Certification

At the end of the course you will get a certification and valuable skills and 100% cultural experience.



## Exclusive Learning Materials

Our learning materials are from Difusion group, a Spanish publisher very well known. Also we have different activities to let you live a unique experience of learning Spanish.



## Friendly learning environment

Our method based on learning a language in a friendly, cultural and open atmosphere.



## Assessing your language

We offer 4 levels of teaching: beginners, elementary, intermediate and advanced. All are regulating by the Common European reference framework.

## The ability to communicate effectively in Spanish is a key factor for us at Glhee and the language levels chart bellows helps in many different ways

- it provides objective descriptions of what tasks can be performed at different levels of ability.
- It helps us place you in class at the right level when you arrive your first day.
- It helps you assess what you can do in the language at particular level as opposed to what you know.
- It indicates what examinations are available at what level.
- It helps you define language objectives that you can aim for.

Please note that some of our study programs demand minimum levels of competence in Spanish- the key below indicates which courses may be taken at which levels. It is important that we determine your level of Spanish before you enroll.

# Levels



## ● **ADVANCED- C1**

You can give a clear, well-structured presentation of a complex subject.

## ● **UPPER INTERMEDIATE- B2**

You manage easily enough in quite complex and demanding situations.

## ● **INTERMEDIATE- B1**

You can make effective and independent use of the language.

## ● **LOWER INTERMEDIATE - A2**

Basic communication is possible with plenty of assistance.

## ● **ELEMENTARY - A1**

You can understand and use very basic phrases.

## ● **BEGINNER**

Assumes no previous study of Spanish.

For more information please visit our website [www.glhee.com](http://www.glhee.com)



# YOUR FUTURE IN SPANISH



Free and open to all students.

APPLIES TO ALL OF OUR PROGRAMS



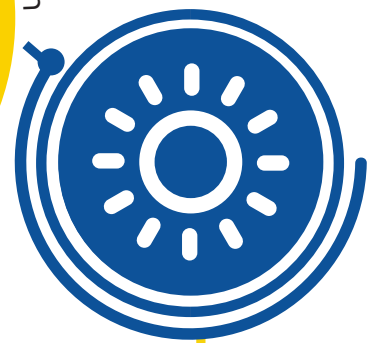
For all tastes: leisure, culture, sports, dancing and more.

To meet people and continue practising your Spanish

**CULTURE PROGRAM**



Sometimes we invite local friends to participate in the activities. Is there a better way to hear and practice real Spanish? Additionally, they will tell you interesting things about Bogotá.



We have not season and our weather is perfect all year round, this is why we organise activities Monday through Thursday, usually in the afternoon.



# Glhee Successful

These programs are designed for students who wish to improve their ability to communicate in Spanish while experience the vibrancy and excitement of Bogotá

## Standard General Spanish

Study Spanish for 15 hours a week, five mornings from Monday to Friday, leaves your afternoons free to visit places of interest in Bogotá and surroundings.



### About the course

This general Spanish Gives students the opportunity to improve their all-round ability in Spanish by focusing on grammar and vocabulary development, speaking, listening, and writing skills. Our key aim is to increase students' confidence in the day-to-day use of the language

## Intensive Spanish

22,5-hours a week intensive courses are for students who want to devote as much time as possible to their Spanish studies and maximize their progress during their time in Colombia.



### About the course

This program combines the morning 'standard' program with an afternoon mini-group. The mini-group allows the tutor to focus on the immediate needs of the student whilst improving listening and speaking skills, expanding vocabulary and developing confidence.

## Combination Spanish Course

General Spanish in a group (:15 hrs) plus 5, 10 or 15 hours of 1 to 1 tuition. The student can practise their communication skills in a class environment and yet also focus on their individual needs.



### About the course

Our Combined Courses allow students to focus on their chosen specific areas of language development and to work one-to-one with their own teacher, in order to achieve their individual language goals.



[www.glhee.com](http://www.glhee.com)  
[info@glhee.com](mailto:info@glhee.com)



## Details

### APPLIES TO ALL OF OUR PROGRAMS

- Up to 10 students per class.
- Morning tuition and Group tuition.
- Homework activities and weekly tests.
- Access to DVDs, CDs and books in the school library.
- End of course certificate and report.
- Courses start on any Monday throughout the year.
- A Glhee folder complete with information pack, pen, writing paper and local maps.

### APPLIES ONLY TO STANDARD GENERAL SPANISH

- 3 hours per day split into three sessions of 60 min.
- 15 hours per week

### APPLIES ONLY TO INTENSIVE SPANISH

- 4,5 hours per day split into four sessions of 60 min.
- 22,5 hours per week (30 lessons).

### APPLIES ONLY TO COMBINATION SPANISH COURSE

- 3 hours per day split into three sessions of 60 min.
- 22,5 hours per week (30 lessons).



## Methodology:

### APPLIES TO ALL OF OUR PROGRAMS

- Communicative method with oral focus.
- Course materials included.
- Native and qualified teachers.
- Continuous teacher training.







# Glhee Professional

**The program is adapted to each professional's needs and combines grammar and communicative skills.**

## Spanish for professionals

The flexibility of these courses is particularly suited to clients who wish to maximise their progress in General Spanish in a short time, whilst also devoting time to specific language areas.

### **About the course**

The program is adapted to each professional's needs and combines grammar and communicative skills. Special emphasis is also put on the related linguistics, historical and sociocultural aspects necessary to understand international relation in Latin America. The general objective of the course is for students to be able to communicate in different situations such as speeches, direct one-on-one interactions, debates and negotiations.

### **Details**

- 3 hours per day split into three sessions of 60 min.
- 10 or 15 hours per week.
- 1 to 1 lessons.
- Homework activities and weekly tests.
- Access to DVDs, CDs and books in the school library.

- End of course certificate and report.
- Courses start base on the student Schedule.
- Time Schedule; morning (7.00am-9.00am) or afternoon (17.00pm to 20.00pm).

#### • **Methodology:**

- Communicative method with oral focus.
- Course materials included.
- Native and qualified teachers.
- Continuous teacher training.

### **Areas of interest**

Areas that can be covered in the Spanish Course for professionals include:

- The Language of Meetings.
- Negotiating.
- Making Presentations.
- Company Organisation, Structure and Culture.
- Corporate Strategy.
- Describing Trends and Graphs.
- Human Resources Sales and Marketing.
- International Trade & Finance.
- Telephoning.
- Formal Business Letter Writing and Emails.
- Socialising & Small Talk.



# Glhee Active

**The program is a 100% cultural immersion, while the student can have contact with the indigenous and the wild nature. It is intended to introduce the student in the subject through experiential experience.**

To learn Spanish, it helps to fall in love with Colombia. Our Language Immersion Tours make both happen by combining interactive language lessons with authentic cultural experiences. Language lessons provide students with the cultural context and relevant vocabulary they'll need to navigate each experiential activity, also your fluency expands along with your confidence and your passion for language. The teacher will be always by your side, supporting your language learning.

**Spanish Level required: Minimum B1**

## La Vorágine



Inirida Flower

This didactic unit is presented with an introductory session of the Orinoco region in Colombia, where you will find the culture of the indigenous communities and Tepuyes. As well as hiking through historical, religious and mythical sites.



11 days travel  
14 hours' lessons (morning or afternoon)  
90 hours of 100% cultural immersion

Dates: 17 February/7 April / 26 May

## Vuelta al Pacífico

This didactic unit is presented with an introductory session of the Pacific region in Colombia where you will find the sea in the middle of the jungle, its food, its villages, its fauna and flora and most important, in October the humpback whales.



11 days travel  
13 hours' lessons (morning or afternoon)  
90 hours of 100% cultural immersion

Dates: 24th April / 17th July / 23rd October  
/ 13th November



## Media Colombia



Caño Cristales

This didactic unit is presented with an introductory session of the most beautiful river in the world! Natural purity full of color and magic realism. Caño Cristales. We'll continue to the city that opens the door for the Amazon and the legend of the Yurupary, we continue with the extraordinary experience of flying over wonderful Chiribiquete right by rock formations that emerge from within the jungle.



12 days travel  
13 hours' lessons (morning or afternoon)  
90 hours of 100% cultural immersion

Dates: 24th April / 17th July / 23rd October  
/ 13th November

# Happy travel, we are waiting for you again!



# GLHEE ACTIVE TRAVEL ROUTE



## COLOMBIA



La Vorágine

El Pacífico

Media Colombia



# Accommodation

It's important your stay in Bogotá is a comfortable one. Glhee has a great range of accommodation options whatever your requirements.

## Hotels and apartments in Bogotá

Glhee can also help arrange your own hotel or apartment accommodation all around north Bogotá. We can recommend a wide range of reasonably priced 3-5 star hotels in the capital.

With great rooms and service, student living has never been so comfortable.

## Homestay

We have paid special attention to our homestay accommodation, so hosts and homes that we have inspected and selected share some common important features.



- The home must be clean and comfortable and enable the student to study quietly.



- Single or twin rooms (subject to availability).



- Full board, breakfast, packed lunch and dinner.



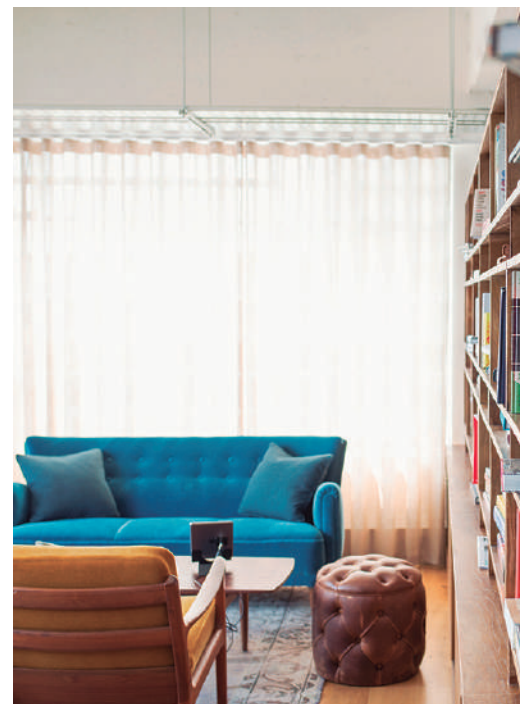
- The host must be friendly and helpful.



- Average journey 30mins, max -50 mins.



We work in every detail to create a pleasant and unique experience for you. A Professional and coordinated team will provide you with all the support necessary so you feel secure and welcome.



# Your adventure is about to begin with GLHEE

# WELCOME HOLA GHLEE

## ARRIVAL

We coordinate your arrival with the transfer service, no matter what time your flight arrives the transfer will be waiting for you at the airport.

## ACCOMMODATION

The transfer will bring you to your accommodation. Staff from the different types of accommodations will show you the facilities and make sure that you have everything that you need.

## FIRST DAY AT GLHEE

Our staff will be waiting for you to give you a warm welcome, show you the school facilities, give the language level test and assign you to your course.

## LUNCH & CITY WALK

On your first day you will have a Welcome lunch to meet all your partners and professors at the school. In the afternoon you will take part in a city walk to know your new city!



## ONE DAY AT GLHEE

### SPANISH CLASSES

Classes start every Monday and are held from Monday to Friday from 9.00a.m to 12.30 p.m in the afternoon 13.30 p.m to 15.00 p.m ( in case you take a intensive course).



### LUNCH

You can have lunch outside with your partners and enjoy typical food.

### GLHEE ACTIVITIES

Enjoy the recreational activities organized by the school, such as salsa, bachata dance, cooking classes, and more!

### ENJOY LATIN NIGHTS

Hundreds of options available will allow you to take full advantage of the city. Theater, Latin American dance shows (professional tango, salsa, folklore), pubs and discos, karaoke night, nice dinners, and more!

# HOW TO BOOK OR ENQUIRE ABOUT A COURSE



**Online:** Book a course by clicking “book now” on our website or enquire about a course by completing an enquiry form online.



**Email:** Email your enquiry to [info@glhee.com](mailto:info@glhee.com). We aim to reply within 24 hours.



**Call Us:** Our offices are open from 8.30am to 18.30pm. Monday to Friday. Call us 00 57 301 203 1427 if you would like more information. If we don't answer your call, please leave a message and we'll get back to you as soon as possible



**Visit our School:** Our school's located in Bogotá city centre so if you are living in the area, stop by and ask about our courses. We will be happy to help.



**Contact your local agent:** We have agents who represent us all over the world, so if you would like to book a course using your local agent just ask them to get in touch with us on your behalf.



## QUOTATION

[www.glhee.com](http://www.glhee.com)  
[info@glhee.com](mailto:info@glhee.com)



**www.glhee.com**  
**info@glhee.com**  
**#holaglhee**

